
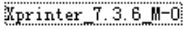
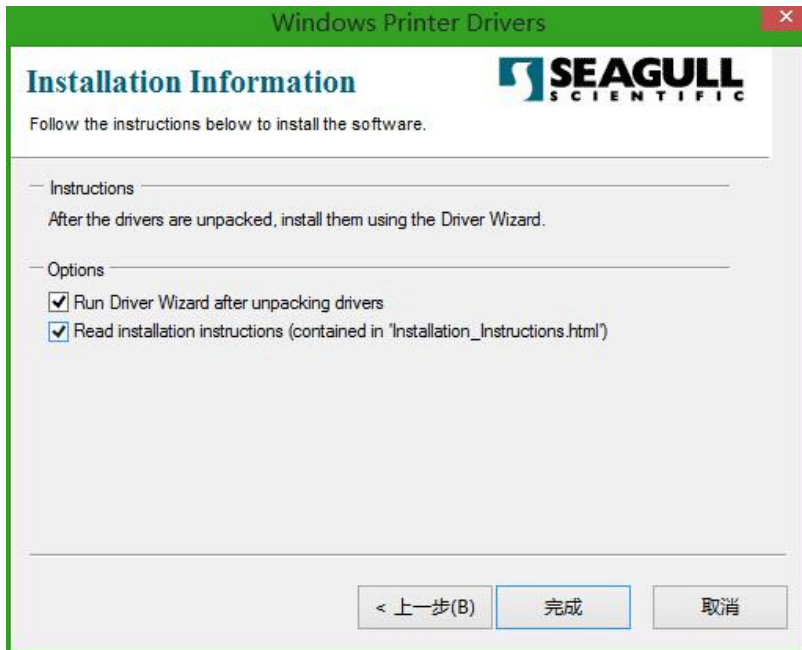


# Barcode printer installation instruction

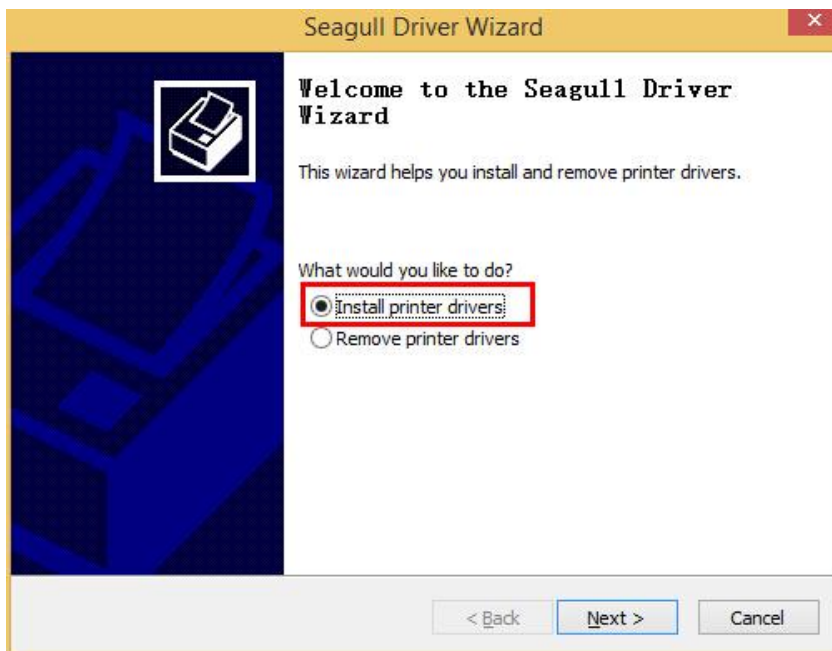
1. Double click driver   to install, choose “I accept the terms in the license agreement” as shown below.



2. After the drivers are unpacked, install them using the Driver Wizard. Follow below steps.

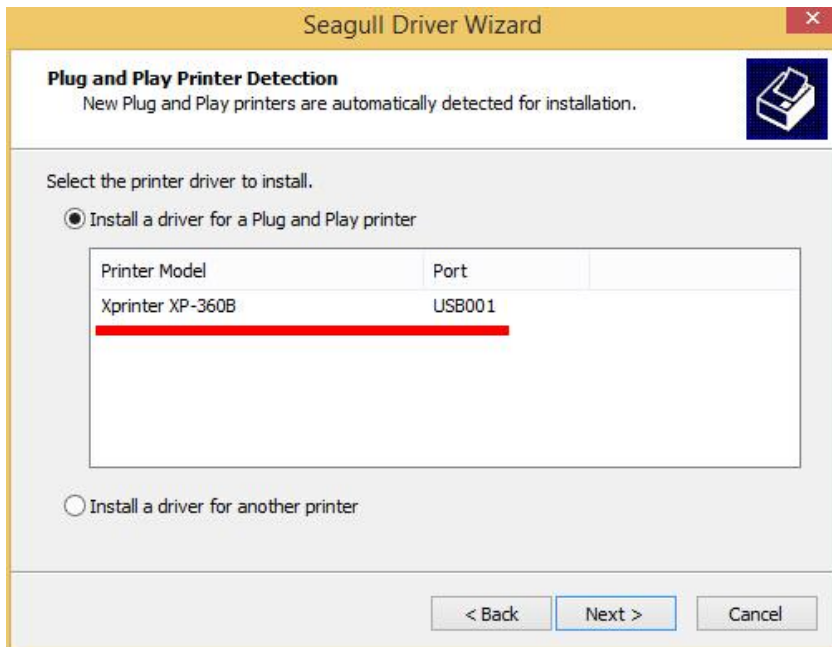


3. choose “Install printer drivers” as shown below.

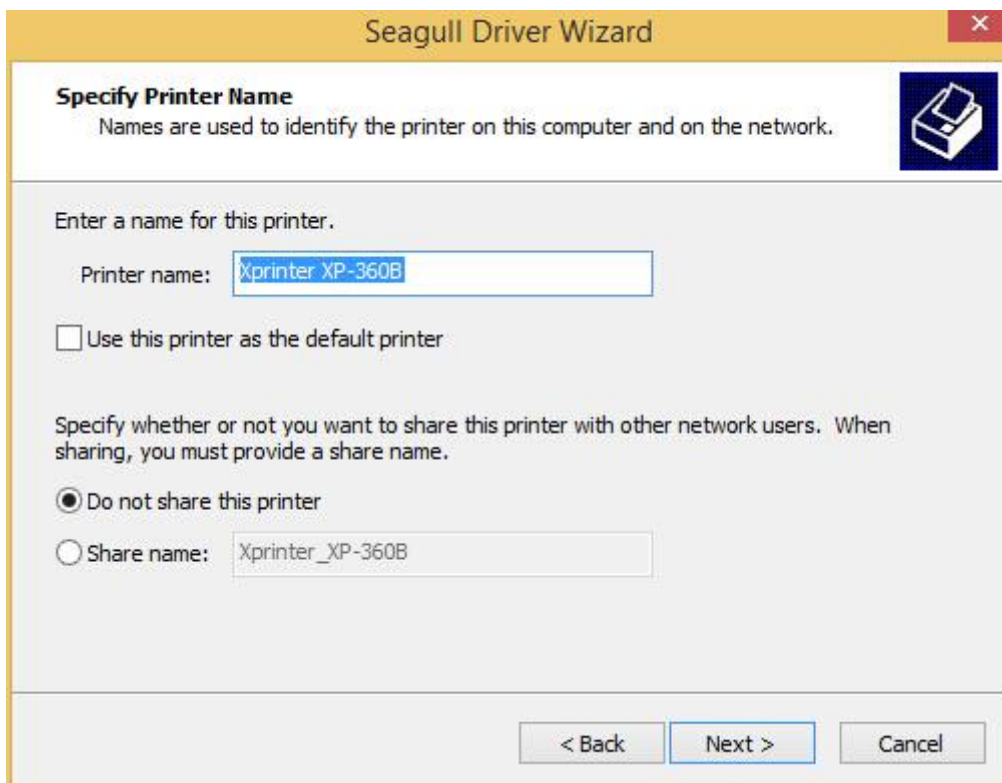


4. Continue with previous step, a new port as USB001/USB002... will be detected automatically after finishing installation. Please follow picture as shown below .

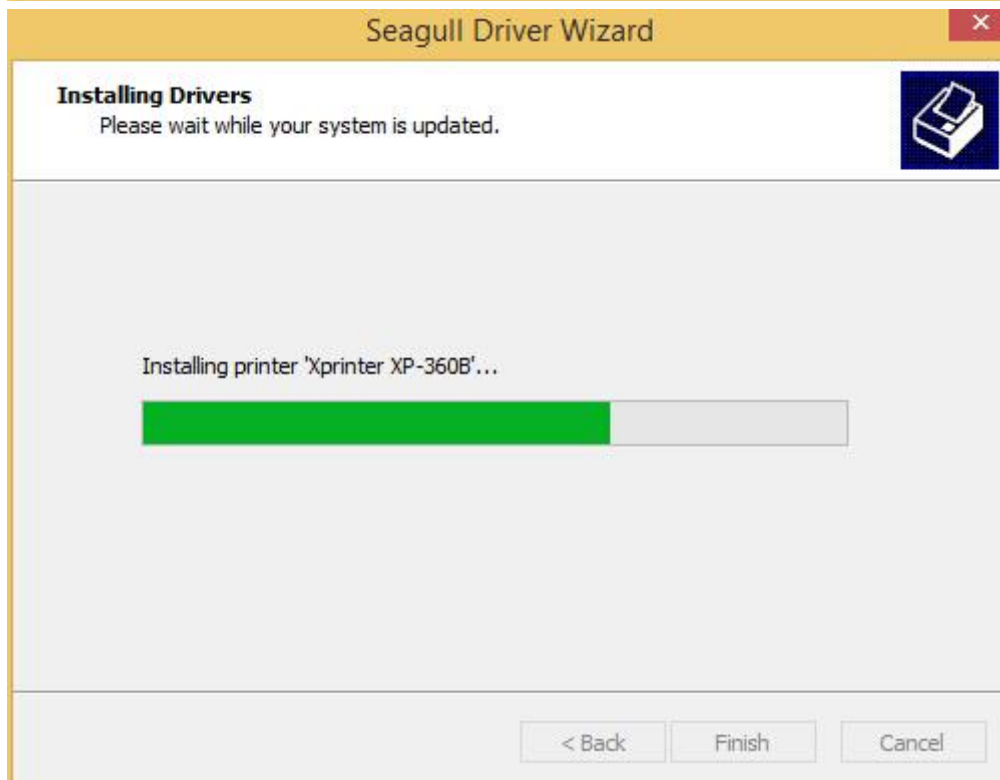
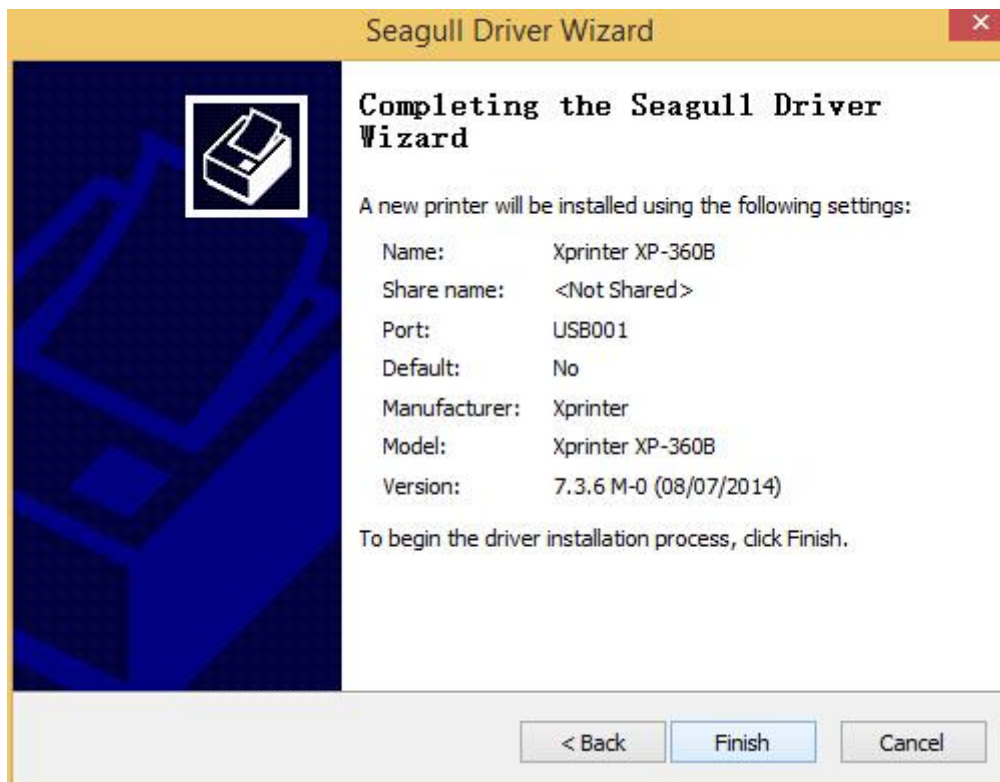
**Remark:** when a port is detected to be used currently, does not need to set another port in driver.



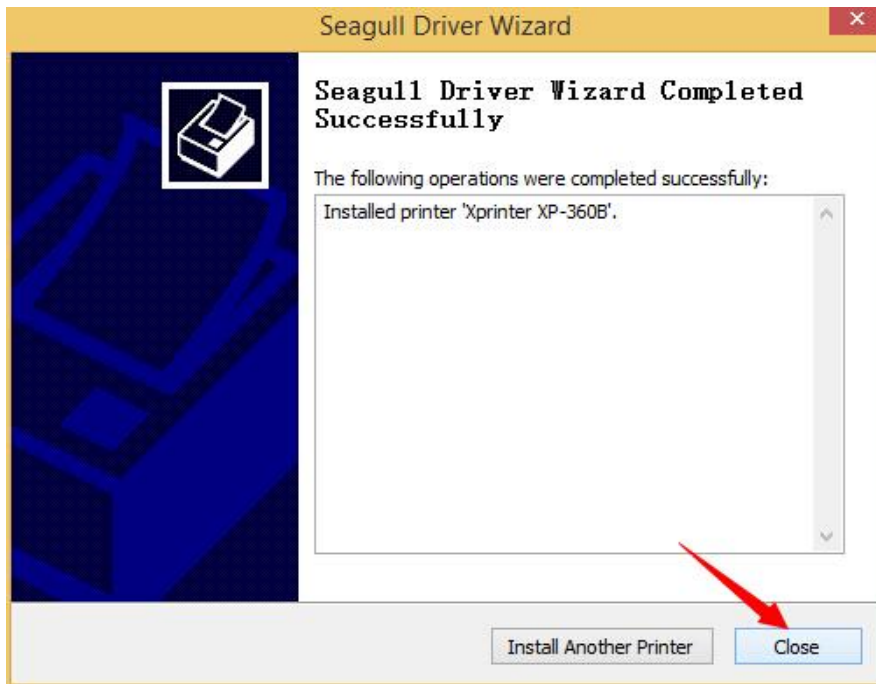
5. The default name of printer is “Xprinter XP-360B” as shown below.



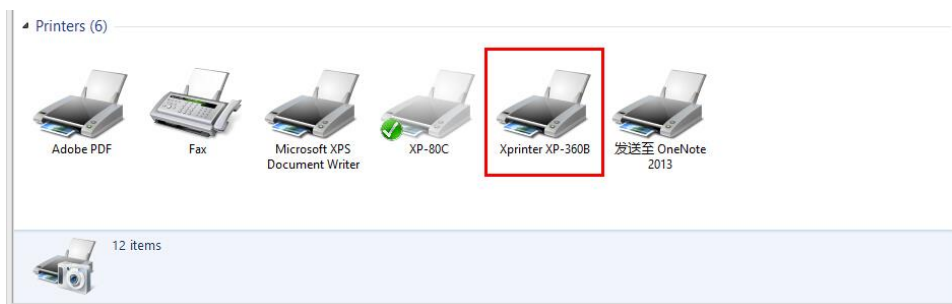
## 6. Completing installation.



7. Installation completed successfully.



8. After installation successfully, please follow the steps as below picture: control panel-- printers and devices--driver icon--printer properties.



9. When finished above steps, click GENERAL -- PRINT TEST PAGE

